

**2023**  
SPRING | SUMMER



  
**etape**



## CONTENT

L A D Y   A C T I V E | 3-13

K I D   A C T I V E | 14-21

M A N   A C T I V E | 22-37





2229312  
white|pink



2229322  
bordeaux|pink



#### WOMEN'S JERSEY **DIAMOND**

- elastic fabric MicroCool
  - mesh side elastic panels AirMesh™
  - **full-length front zipper**
  - 3 rear open pockets
  - reflective detailing
- sizes: S – XL





2126521  
pink|black



2026592  
white|pink



#### WOMEN'S JERSEY

#### LIV

- elastic fabric MicroCool
  - front zipper
  - 3 rear open pockets
  - reflective detailing
- sizes: S - XXL



match  
accessories







1922812  
black|pink



2100412  
black|pink



#### WOMEN'S JERSEY

##### CLARA

- elastic SuperDryntex fabric
- 20 cm front zipper
- 3 rear open pockets
- reflective detailing

sizes: S - XXL



#### WOMEN'S JERSEY

##### PRETTY

- elastic SuperDryntex fabric
- mesh side elastic panels AirMesh™
- elastic waistband and sleeve ending
- front zipper
- 3 rear open pockets
- reflective detailing

sizes: S - XXL





2128812  
magenta/black

#### WOMEN'S JERSEY

### GAIA

- warmer elastic fabric MicroCool
- full-length front zipper with neck protector
- rear zippered pocket
- reflective detailing

sizes: S – XL

**MicroCool™**  10 °C to 20 °C



2314167  
yellow fluo/anthracite

**NEW**

**AIR**  
#MESH



#### WOMEN'S WINDJACKET


### GLORIA 2.0

- windproof lightweight ripstop WindShell fabric with water-repellent finish
- stretchable side AirMesh™ panels for effective ventilation
- ventilation on the back
- comfortable elastic waist border and trim on sleeves
- full-length front zipper with neck protector
- **easy access to rear jersey pockets through flapped hole**
- reflective detailing

sizes: S – XXL

**WIND**  
SHELL

**AIR**  
#MESH

 5 °C to 20 °C



2013412  
black|pink



2013410  
black

#### WOMEN'S SKIRT

### LAURA

- breathable SuperDryntex fabric
- comfortable wide waistband
- removable elastic liner with elastic Stretch Woman seat pad and anti-slip silicone ending
- reflective detailing

sizes: S – XL (2013412)  
S – XXL (2013410)



removable elastic  
liner





2228610  
black



2028619  
black|white



2023912  
black|pink

#### WOMEN'S SHORT

##### LIVIA

- Fibra Pro™ fabric
- elastic waistband
- anti-slip leg band Fit+™
- reflective detailing
- elastic Stretch Women seat pad

sizes: S – XXL



#### WOMEN'S SHORT

##### SARA

- Fibra Pro™ fabric
- elastic waistband
- anti-slip leg band Fit+™
- reflective detailing
- elastic Stretch Women seat pad

sizes: S – XL







2120810  
black



2220812  
black|pink



2023219  
black|white



2201510  
black

#### WOMEN'S KNICKER

### LIVIA 3/4

- Fibra Pro™ fabric
- elastic mesh inserts AirMesh™ at the back of the knees
- elastic waistband
- anti-slip leg band Fit+™
- reflective detailing
- elastic Stretch Women seat pad

sizes: S - XL (2220812)

S - XXL (2120810)



#### WOMEN'S KNICKER

### SARA 3/4

- Fibra Pro™ fabric
- elastic mesh inserts AirMesh™ at the back of the knees
- elastic waistband
- anti-slip leg band Fit+™
- reflective detailing
- elastic Stretch Women seat pad

sizes: S - XXL



#### WOMEN'S KNICKER

### LADY 3/4

- Fibra Pro™ fabric
- elastic waistband
- reflective detailing
- elastic Soft Women seat pad

sizes: S - XXL





2017097  
white|silver



2117092  
white|pink



2117017  
black|titanium matt



1917012  
black|pink matt



#### WOMEN'S HELMET

### VENUS

- HardShell technology
- 25 holes for effective ventilation
- front holes with insect nets
- removable front visor
- reflective stickers on back
- QFS comfort fit system

sizes: S/M (55-58 cm)  
L/XL (58-61 cm)





2026619  
black|white matt



2026620  
black|pink matt



2026692  
white|pink

#### WOMEN'S HELMET

##### VESPER

- In-mold technology
- 23 holes for effective ventilation
- front holes with insect nets
- removable front visor
- reflective stickers on back
- QFS quick fit system

sizes: S/M (55-58 cm)

L/XL (58-61 cm)



MOLDING



2116019  
black



2116012  
black|pink

#### WOMEN'S SOCKS

##### KISS

- functional ClimaTec yarns
- elastic ankle cuff
- midfoot support band maximal comfort
- mesh for effective ventilation

sizes: S (35-38)

M/L (39-42)

CLIMATEC





1809419  
black/white



1809412  
black/pink



2122210  
black



2122222  
pink|black



2022229  
black/pink



#### WOMEN'S GLOVES

### BETTY

sizes: S - L (1809419)  
XS - XL (1809412)



#### WOMEN'S GLOVES

### LIANA

sizes: S - L





1926912  
black|pink



2026919  
black|white



1926992  
white|pink



#### WOMEN'S GLOVES

### AMBRA

sizes: S - L



2100112  
magenta|black



#### WOMEN'S GLOVES

### PAOLA+

- patches for touch screen control SmartTouch
- ventilation on palm and fingers
- gel padding GelPro
- anti-slip material on palm and fingers
- reinforcement suitable for grip shifting
- antibacterial terry on thumb
- comfortable Velcro closure
- reflective detailing

sizes: S - L

**SMART TOUCH** **REFLECTIV**



match  
accessories





2126890  
white|pink



2126834  
blue



#### KID'S JERSEY

### RIO

- MicroCool fabric
- front zipper
- 3 rear open pockets
- reflective detailing

sizes:

116/122, 128/134, 140/146 (2126890)

116/122, 128/134, 140/146, 152/158 (2126834)

**MicroCool™**



match  
accessories







1922528  
pink|lime



1922583  
green|blue



#### KID'S JERSEY

#### PEDDY

- MicroCool fabric
- front zipper
- 3 rear open pockets
- reflective detailing

sizes:

116/122, 128/134, 140/146, 152/158

**MicroCool™**



match  
accessories



1505813  
black|blue



1505818  
black|green



1505812  
black|pink



58-10  
black



#### KID'S SHORT JUNIOR

- Fibra Pro™ fabric
- drawcord at waistband
- anti-slip leg band ending
- reflective detailing
- anatomic Soft Kid seat pad

sizes:

116/122, 128/134, 140/146, 152/158





2004983  
blue|green



TINY 2104438  
blue



TINY 1904488  
green



TINY 1904434  
blue



TINY 2204480  
green



2004929  
pink|white



TINY 2104490  
white|pink



TINY 1904492  
white



TINY 2104420  
pink|white

#### KID'S GLOVES

##### SIMPLE

- antibacterial terry on thumb
  - anatomic palm stitching
  - anti-slip fabric for perfect grip on palm
- sizes: 5-6, 7-8, 9-10, 11-12



#### KID'S GLOVES

##### TINY | REX

- anatomic palm stitching
  - anti-slip fabric
- sizes: 3-4, 5-6, 7-8



TINY 1904422  
pink



REX 1820592  
white|pink





2121392  
white matt



2125876  
anthracite|yellow fluo matt



2125883  
green|blue matt

#### GIRL'S HELMET

### MISSY

- In-mold technology
- 17 holes for effective ventilation
- front holes with insect net
- removable front visor
- reflective stickers on back
- EFS fit system

sizes: XS/S (48-53 cm)  
S/M (55-58 cm)



#### KID'S HELMET

### HERO

- In-mold technology
- 17 holes for effective ventilation
- front holes with insect net
- removable front visor
- reflective stickers on back
- EFS fit system

sizes: XS/S (48-53 cm)  
S/M (55-58 cm)



match  
accessories



1921434  
blue|red



2221483  
green matt



1921492  
white|pink matt



2221422  
white|purple matt



#### KID'S HELMET

#### PLUTO LIGHT

- In-mold technology
- integrated rear LED's light
  - 6 super bright red LEDs
  - 3 modes: permanent, 2 types of flashing
- 12 holes for effective ventilation
- front holes with insect net
- reflective stickers
- EFS fit system

sizes: XS/S (48-52 cm)  
S/M (52-56 cm)



MOLDING



match  
accessories





2225722  
pink



2225788  
green



#### KID'S HELMET

### KITTY 2.0

- In-mold technology
- 14 holes for effective ventilation
- front holes with insect net
- front integrated visor
- reflective stickers on back
- EFS comfort fit system
- **weight only 170 g** (size XXS)

sizes: **XXS (44-48 cm)**

XS/S (48-52 cm)

S/M (52-56 cm)



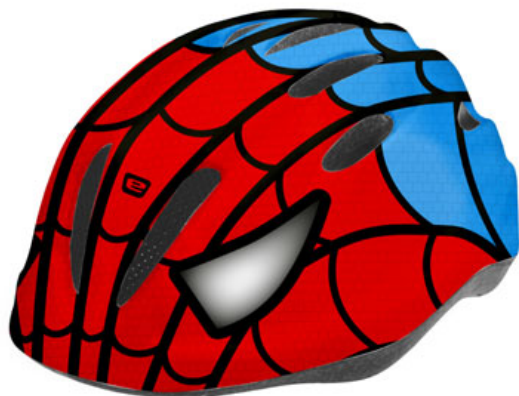
MOLDING



match  
accessories







REBEL 2325235  
blue|red  
**NEW**



REBEL 2225280  
green



PONY 1908760  
yellow



REBEL 2125229  
white|pink  
**NEW**



REBEL 2025290  
white|pink



REBEL 1825292  
white|pink

#### KID'S HELMET

### REBEL | PONY

- HardShell technology
- 12 holes for effective ventilation
- front holes with insect net
- front integrated visor
- reflective stickers on back
- EFS comfort fit system

sizes: XS/S (48-52 cm)

S/M (52-56 cm)



match  
accessories





2229518  
black|green



2022418  
black|green



#### MEN'S JERSEY **DREAM 2.0**

- MicroCool fabric
  - full-length front zipper
  - 3 rear open pockets
  - reflective detailing
- sizes: M - 3XL



match  
accessories



#### MEN'S JERSEY **ENERGY**

- MicroCool fabric
  - front zipper
  - 3 rear pockets
  - reflective detailing
- sizes: M - 4XL



match  
accessories





2100516  
black|yellow fluo



2000513  
black|blue



#### MEN'S JERSEY

#### FACE

- MicroCool fabric
  - front zipper
  - 3 rear pockets
  - reflective detailing
- sizes: M – 3XL



match  
accessories







2221618  
black|green



2100816  
black|yellow fluo

#### MEN'S RELAXED FIT JERSEY

##### FREETIME

- MicroCool fabric
- **relaxed fit**
- front zipper
- rear zippered pocket
- reflective detailing

sizes: L – 3XL

**MicroCool™**

match  
accessories



#### MEN'S JERSEY

##### COMFORT

- warmer elastic fabric MicroCool
- full-length front zipper with neck protector
- rear zippered pocket
- reflective detailing

sizes: M – 3XL

**MicroCool™**

10 °C to 20 °C

match  
accessories





2324516  
black|yellow fluo  
**NEW**



2324561  
yellow fluo  
**NEW**



**AIR**  
#MESH™

# WINDJACKET BORA 2.0

- windproof lightweight ripstop WindShell fabric with water-repellent finish
- stretchable side AirMesh™ panels for effective ventilation
- ventilation on the back
- comfortable elastic waist border and trim on sleeves
- full-length front zipper with neck protector
- **easy access to rear jersey pockets through flapped hole**
- reflective detailing

sizes: M – 4XL (2324561)

L – 4XL (2324516)

**WIND**  
SHELL

**AIR**  
#MESH™



5 °C to 20 °C



2213110  
black|anthracite



2113103  
black|blue



2113106  
black|yellow fluo



2013181  
black|green



#### MEN'S SHORT

#### ELITE

- Fibra Pro™ fabric
  - anti-slip leg band Fit+™
  - reflective detailing
  - Soft Man seat pad
- sizes: M – 3XL







1601410  
black



2201010  
black



2209910  
black

#### MEN'S BIBSHORT PROFI LACL

- Fibra Power™ fabric
  - elastic mesh bib straps AirMesh™
  - anti-slip leg band Fit+™
  - reflective detailing
  - Stretch Man elastic seat pad
- sizes: M – 3XL



#### MEN'S SHORT, KNICKER RACE | RACE 3/4

- Fibra Pro™ fabric
  - anti-slip silicone leg band
  - reflective detailing
  - Soft Man seat pad
- sizes: M – 3XL





1701910  
black



BAGGY SHORT  
**FREERIDE**

- X5 elastic and breathable fabric
- removable elastic liner with Stretch Man seat pad
- adjustable Velcro waist band
- front zipper
- 2 open pockets + 2 zippered pockets
- reflective details

sizes: M – 4XL



removable elastic  
liner





1827017  
black



2027013  
black|blue



1827018  
black|green



#### BAGGY SHORT FREEDOM

- X2 breathable fabric
  - removable elastic liner with Soft Man seat pad
  - adjustable Velcro waist band
  - 3 zippered pockets
  - reflective details
- sizes: M - 3XL



removable elastic  
liner



match  
accessories







2011610  
black matt



2011631  
black|blue matt



2011681  
black|green matt



# HELMET ESCAPE

- In-mold technology
- 23 holes for effective ventilation
- front holes with insect nets
- removable front visor
- reflective stickers on back
- QFS fit system

sizes: S/M (55-58 cm)  
L/XL (58-61 cm)



MOLDING





2121516  
black|yellow fluo matt



1921510  
black matt



#### HELMET

#### VIRT LIGHT

- In-mold technology
  - Integrated rear LED's light
    - 6 super bright red LEDs
    - 3 modes: permanent, 2 types of flashing
  - 20 holes for effective ventilation
  - front holes with insect nets
  - removable front visor
  - reflective stickers on back
  - QFS fit system
- sizes: S/M (55-58 cm)  
L/XL (58-61 cm)



MOLDING







# HELMET

## MAGNUM

- In-mold technology
- 27 holes for effective ventilation
- front holes with insect nets
- removable front visor
- reflective stickers on back
- QFS comfort fit system

sizes: S/M (55-58 cm)  
L/XL (58-61 cm)



MOLDING







1908317  
black|titanium matt



2008318  
black|green matt



1908316  
black|yellow fluo matt



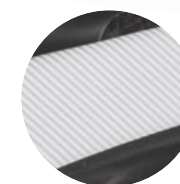
2008371  
silver|black matt

#### HELMET

#### BIKER

- HardShell technology
- 25 holes for effective ventilation
- front holes with insect nets
- removable front visor
- reflective stickers on back
- QFS comfort fit system

sizes: S/M (55-58 cm)  
L/XL (58-61 cm)





2204110  
black



2204116  
black|yellow fluo



2204118  
black|green



1921818  
black|green



2121816  
black|yellow fluo



1921810  
black



2021813  
black|blue

#### GLOVES

### WINNER

sizes: S - XXL (2204110)

S - XL (2204116, 2204118)



REFLECTIV

#### GLOVES

### GARDA

sizes: S - XXL





2009610  
black



2026310  
black



2026313  
black|blue



2009618  
black|green



2326316  
black|yellow fluo  
**NEW**



2026318  
black|green



#### GLOVES

### SPEED

sizes: M - XXL (2009610)

M - XL (2009618)



#### GLOVES

### AIR

sizes: S - XXL





1811110  
black



2103916  
black|yellow fluo



#### GLOVES

##### FOX+

- patches for touch screen control SmartTouch
- ventilation on palm, back and between fingers
- gel padding GelPro
- anti-slip material on palm
- reinforcement between thumb and point finger
- antibacterial terry on thumb
- comfortable Velcro closure

sizes: S - XL

**SMART  
TOUCH**



#### GLOVES

##### SPRING+

- patches for touch screen control SmartTouch
- ventilation on palm and fingers
- gel padding GelPro
- anti-slip material on palm and fingers
- reinforcement between thumb and point finger
- antibacterial terry on thumb
- comfortable Velcro closure
- reflective detailing REFLECTIV™

sizes: M - XL

**SMART  
TOUCH**

**REFLECTIV**



match  
accessories







2106010  
black



2110710  
black



2110610  
black

#### WARMERS

#### ARM | KNEE | LEG

- ThermoFit for fine warmth
- anatomic cut
- anti-slip elastic silicone leg ending
- leg warmers – ankle zippers
- reflective detailing REFLECTIV™

sizes: S – XL

**THERMO***fit* **REFLECTIV**



2107018  
black|green



2107016  
black|yellow fluo



2107017  
black|anthracite

#### SOCKS

#### SOX

- functional ClimaTec yarns
- elastic ankle cuff
- midfoot support band maximal comfort
- mesh for effective ventilation

sizes: M/L (40-43)

XL (44-47)

**CLIMATEC**

## HELMET TECHNOLOGY | DESIGN | STYLE



**IN-MOLD** – direct moulding of the polystyrene to the shell forms an inseparable bond between the two materials. Thanks to this technology the helmet has very good mechanical features and excellent look.



**HARDSHELL** – thanks to the combination of very hard polycarbonate top shell and inside polystyrene shell the helmet is able to absorb the shocks and guarantees very high level of protection and safety.



**QFS (Quick Fit System)** – fit system which provides the perfect adjustment according to the head perimeter and ensures safety and comfortable positioning on the head. Maximum comfort is achieved by using very exact fixing mechanism with anatomically shaped wheel.



**EFS (Easy Fit System)** – fit system which provides the perfect adjustment according to the head perimeter. Perfect cycling helmet set-up is the basic presumption not even for its good function but also for the comfortable bike ride.



**LED Light** – Integrated rear light helps to increase your visibility on the road during daylight, nightfall and night.



**E-BIKE READY** – Means that this product is suitable for using on e-bike which demand equipment with higher durability and safety features. Cycle helmets have to be able to absorb hits in high speed, also additional safety features, like rear red lights, are welcomed.



All Etape cycling helmets are certified according to the EN 1078+A1 standard.

## GLOVES TECHNOLOGY | DESIGN | FASTENING SYSTEMS



**Take Off System** – very effective system made by two silicone straps that guarantee very comfortable gloves removal.



**Max Air Comfort** – lightweight and breathable fabrics for excellent wicking. Bi-elastic mesh panels for maximal comfort and ventilation.



**Gel Pro Technology** – special gel padding guarantee maximal and long-lasting shock resistance of your hand. The right position of gel padding is very important for comfort and safe ride.



**Anti Slip System** – there are well-shaped anti slip fabrics on palm which enable firm grip of handlebar and prevent from slipping.



**Sweat Dry Comfort** – smooth antibacterial terry cloth on the thumb to dry the sweat in the hot weather or exhausting ride.



**Lady Cut** – women models have a cut which respects specific female hand shape. Also, the fabrics and gel padding position are different.



**SmartTouch** – thanks to SmartTouch technology, you will be able to interact your touchscreen (whether it is your MP3, camera, video camera, navigation or mobile phone).

## FABRIC TECHNOLOGY



**SuperDryntex** Fabric made from functional polyester yarn. SuperDryntex is softer, more comfortable and with more natural touch than cotton or regular synthetic fibres. Very quickly transports moisture to the outside and thanks wicking effect keeps your body constantly fresh. Thanks to antibacterial treatment is very easy to take care of SuperDryntex garment. Different fabric styles made of SuperDryntex fibres offer various features and thermo-insulation features.



**MicroCool** The new functional fabric MicroCool is made of fine polyester fibres. Thanks to 3-D structure offers much better moisture evaporation from body and keep your body dry and comfortable during intensive performance.



**AirMesh** High breathable fabric used for most exposed parts. Prevents unwanted overheat and offers great moisture management. Thanks to its elasticity provides perfect fit.



**Fibra Pro™** Fabric designed for pro race or just for ride. Its unique structure provides perfect moisture management, the fabric is highly elastic and makes you feel comfortable even during whole day ride.



**Fibra Power™** New fabric offers compression power with freedom of movement. This Lycra fabric helps garments maintain originally engineered compression levels. The garments with Lycra fibres help you look and feel great.



**X series** Materials X series are highly breathable and provides durability. Perfectly combine requirements of sports apparel and lifestyle clothing. Material XC and X5 provides outstanding stretch.



**ThermoFit** is highly stretchable fabric with excellent thermo-insulation features provides durability. The fabric has very good elasticity, smooth soft touch and antibacterial finish.



**WindShell** Windproof fabric made of polyamide fibers with water-repellent finish. Inside protective layer increase resistance to windy and rainy weather. The fabric is very light and therefore the garment is possible to pack into small pouch.



**ClimaTec** functional fabric provides excellent moisture management and high durability. These yarns are very comfortable and maintain an optimal microclimate for the feet. Great for every sport activity.



**Reflectiv** This highly reflective material increases your safety due to higher visibility in bad weather condition or at night.



**Stretch** Seamless technology of Etape Stretch seat pad and its all-directions elasticity ensure maximum comfort during the bike ride. The seat pad shape and structure respect the anatomical differences of a woman body (**Stretch Woman**) and of a man body (**Stretch Man**).



**Soft** Seamless technology of Etape Soft seat pad ensures maximum comfort during the bike ride. The seat pad shape and structure respect the anatomical differences of a man body (**Soft Man**) and of a children body (**Soft Kid**).



## SIZE CHART

MEN (UNISEX)	S	M	L	XL	XXL	3XL
height (cm)	160-175	170-180	175-185	180-190	185-195	190-200
bustline (cm)	88-94	94-100	100-106	106-112	112-118	118-124
waistline (cm)	76-82	82-88	88-94	94-100	100-106	106-112
hipline (cm)	90-96	96-102	102-108	108-114	114-120	120-126

WOMEN	S	M	L	XL	XXL
height (cm)	160-168	165-172	168-176	172-180	172-180
bustline (cm)	82-88	88-94	94-100	100-106	106-110
waistline (cm)	66-72	72-78	78-84	84-90	90-94
hipline (cm)	88-94	94-100	100-106	106-110	110-114

All conversions are approximate. Fits may vary by style or personal preference.

**Deutschland**

Cheyenne-Sport active wear  
phone: +49 7256 202 4577  
e-mail: info@cheyenne-sport.de  
www.cheyenne-sport.de

**Latvija**

Aktiva turisma centrs EZI  
phone: +371 64226223  
e-mail: veikals@ezi.lv  
www.veikals.ezi.lv

**Magyarország**

FXC Plusz Bt.  
phone: +36 30 9714975  
e-mail: balazs@protektorok.hu  
www.protektorok.hu

**Polska**

Alpin Bike  
phone: +48 77 4036823  
e-mail: info@alpinbike.pl  
www.alpinbike.pl

**Slovenija**

INTEGRA SPORT d.o.o.  
phone: +386-3-700-11-20  
e-mail: bikeshop@siol.net  
www.bike-shop.si



**VIVA Lanškroun spol. s r.o.**  
Opletalova 92, 563 01  
Lanškroun, Czech Republic  
tel.: +420 732 523 057  
e-mail: info@viva-sport.cz  
**www.etape.cz**