

2024
SPRING | SUMMER



etape

CONTENT

L A D Y A C T I V E | 3-13

K I D A C T I V E | 14-22

M A N A C T I V E | 23-41





2432981
mint|black
NEW



2229322
bordeaux|pink



WOMEN'S JERSEY

VIOLET

- elastic fabric MicroCool
 - **full-length front zipper**
 - 3 rear open pockets
 - reflective detailing
- sizes: S - XXL



match
accessories



WOMEN'S JERSEY

DIAMOND

- elastic fabric MicroCool
 - mesh side elastic panels AirMesh™
 - **full-length front zipper**
 - 3 rear open pockets
 - reflective detailing
- sizes: S - XL





2126521
pink|black



2026592
white|pink



1922812
black|pink

WOMEN'S JERSEY

LIV

- elastic fabric MicroCool
- front zipper
- 3 rear open pockets
- reflective detailing

sizes: S - XL (2026592)
S - XXL (2126521)



match
accessories



WOMEN'S JERSEY

CLARA

- elastic SuperDryntex fabric
- 20 cm front zipper
- 3 rear open pockets
- reflective detailing

sizes: S - XXL





2100412
black|pink



2428881
mint|black
NEW



2128812
magenta|black

WOMEN'S JERSEY

PRETTY

- elastic SuperDryntex fabric
- mesh side elastic panels AirMesh™
- elastic waistband and sleeve ending
- front zipper
- 3 rear open pockets
- reflective detailing

sizes: S - XXL



WOMEN'S JERSEY

GAIA 2.0

- warmer elastic fabric MicroCool
- full-length front zipper with neck protector
- 3 rear pocket
- reflective detailing

sizes: S - XXL



WOMEN'S JERSEY

GAIA

- warmer elastic fabric MicroCool
- full-length front zipper with neck protector
- rear zippered pocket
- reflective detailing

sizes: S - XL





2314167
yellow fluo|anthracite



WOMEN'S WINDJACKET
GLORIA 2.0

- windproof lightweight ripstop WindShell fabric with water-repellent finish
- stretchable side AirMesh™ panels for effective ventilation
- ventilation on the back
- comfortable elastic waist border and trim on sleeves
- full-length front zipper with neck protector
- easy access to rear jersey pockets through flapped hole
- reflective detailing

sizes: S - XL



5 °C to 20 °C

loop for gloves
loop for glasses



2405912
black|pink
NEW

WOMEN'S BAGGY SHORT
CAT 2.0

- X6 new breathable stretch fabric
- inside removable elastic liner with Stretch Woman seat pad
- elastic panel for even more comfort during ride
- adjustable Velcro waist band
- 2 zippered pockets
- loop for glasses|gloves
- reflective detailing

sizes: S - XXL



removable elastic
liner



2013410
black



2013412
black|pink



2407412
black|pink
NEW



2418010
black
NEW

WOMEN'S SKIRT

LAURA

- breathable SuperDryntex fabric
- comfortable wide waistband
- removable elastic liner with elastic Stretch Woman seat pad and anti-slip silicone ending
- reflective detailing

sizes: S - XL



removable elastic
liner

WOMEN'S SKIRT

BELLA

- breathable X6 fabric
 - breathable elastic SuperDryntex fabric at waistband
 - comfortable wide waistband
 - secret zippered pocket
 - reflective detailing
 - **without removable elastic liner with seat pad**
 - fully compatible with short elastic liner ELSA, 2418010
- sizes: S - XXL



WOMEN'S ELASTIC LINER

ELSA

- mesh elastic fabric AirMesh™
 - elastic waistband
 - anti-slip leg band
 - elastic Stretch Women seat pad
- sizes: S - XXL





2228610
black



2028619
black|white



2328612
black|pink
NEW



2433881
black|mint
NEW

WOMEN'S SHORT

LIVIA

- Fibra Pro™ fabric
- elastic waistband
- anti-slip leg band Fit+™
- reflective detailing
- elastic Stretch Women seat pad

sizes: S - XL



WOMEN'S SHORT

LIVIA 2.0

- Fibra Pro™ fabric
- anatomic elastic waistband
- anti-slip leg band Fit+™
- reflective detailing
- elastic Stretch Women seat pad

sizes: S - XL





2120810
black



2220812
black|pink



2023219
black|white



2201510
black

WOMEN'S KNICKER

LIVIA 3/4

- Fibra Pro™ fabric
- elastic mesh inserts AirMesh™ at the back of the knees
- elastic waistband
- anti-slip leg band Fit+™
- reflective detailing
- elastic Stretch Women seat pad

sizes: S - XL (2220812)
S - XXL (2120810)



WOMEN'S KNICKER

SARA 3/4

- Fibra Pro™ fabric
- elastic mesh inserts AirMesh™ at the back of the knees
- elastic waistband
- anti-slip leg band Fit+™
- reflective detailing
- elastic Stretch Women seat pad

sizes: S - XXL



WOMEN'S KNICKER

LADY 3/4

- Fibra Pro™ fabric
 - elastic waistband
 - reflective detailing
 - elastic Soft Women seat pad
- sizes: S - XXL





1809419
black|white



1809412
black|pink



2422281
black|mint
NEW



2122222
pink|black



2022229
black|pink



2122210
black

WOMEN'S GLOVES

BETTY

sizes: S - L (1809419)
XS - L (1809412)



WOMEN'S GLOVES

LIANA

sizes: S - L





1926912
black|pink



2026919
black|white



1926992
white|pink



WOMEN'S GLOVES

AMBRA

sizes: S - L



2100112
magenta|black

WOMEN'S GLOVES

PAOLA+

- patches for touch screen control SmartTouch
- ventilation on palm and fingers
- gel padding GelPro
- anti-slip material on palm and fingers
- reinforcement suitable for grip shifting
- antibacterial terry on thumb
- comfortable Velcro closure
- reflective detailing

sizes: S - L

SMART TOUCH REFLECTIV



2116019
black



2116012
black|pink

WOMEN'S SOCKS

KISS

- functional ClimaTec yarns
 - elastic ankle cuff
 - midfoot support band maximal comfort
 - mesh for effective ventilation
- sizes: S (35-38), M/L (39-42)

CLIMATEC



2434378
anthracite|mint matt
NEW

WOMEN'S HELMET

X-RAY

- Double In-mold technology
 - 19 holes for effective ventilation
 - front holes with insect nets
 - removable front visor
 - reflective stickers
 - QFS quick fit system
 - weight only 300 g (size S/M)
- sizes: S/M (55-58 cm)
L/XL (58-61 cm)



2026620
black|pink matt

WOMEN'S HELMET

VESPER

- In-mold technology
 - 23 holes for effective ventilation
 - front holes with insect nets
 - removable front visor
 - reflective stickers on back
 - QFS quick fit system
- sizes: S/M (55-58 cm)
L/XL (58-61 cm)





2017097
white|silver



2417018
black|mint matt
NEW



2117092
white|pink



2117017
black|titanium matt



1917012
black|pink matt

WOMEN'S HELMET

VENUS

- HardShell technology
- 25 holes for effective ventilation
- front holes with insect nets
- removable front visor
- reflective stickers on back
- QFS comfort fit system

sizes: S/M (55-58 cm)

L/XL (58-61 cm)





2126890
white|pink



2126834
blue



KID'S JERSEY

RIO

- MicroCool fabric
- front zipper
- 3 rear open pockets
- reflective detailing

sizes:

116/122, 128/134, 140/146 (2126890)

116/122, 128/134, 140/146, 152/158 (2126834)



match
accessories



2322529
purple|pink
NEW



2322580
green|blue
NEW



1922528
pink|lime



1922583
green|blue

KID'S JERSEY
PEDDY 2.0

- MicroCool fabric
- front zipper
- 3 rear open pockets
- reflective detailing

sizes:
116/122, 128/134, 140/146, 152/158



KID'S JERSEY
PEDDY

- MicroCool fabric
- front zipper
- 3 rear open pockets
- reflective detailing

sizes:
128/134, 140/146, 152/158 (1922583)
116/122, 128/134, 140/146, 152/158 (1922528)





1505812
black|pink



1505813
black|blue



1505818
black|green



2304938
blue|green
NEW



58-10
black

KID'S SHORT JUNIOR

- Fibra Pro™ fabric
- drawcord at waistband
- anti-slip leg band ending
- reflective detailing
- anatomic Soft Kid seat pad

sizes:

116/122, 128/134, 140/146, 152/158



KID'S GLOVES SIMPLE 2.0

- antibacterial terry on thumb
 - breathable elastic back-of-hand mesh AirMesh™
 - anatomic palm stitching
 - anti-slip fabric for perfect grip on palm
- sizes: 5-6, 7-8, 9-10, 11-12





2404435
red|blue
NEW



2204480
green



1904434
blue



1904488
green



2004929
pink|white



2104490
white|pink



1904422
pink



2404428
pink|mint
NEW



1904492
white



2104420
pink|white

KID'S GLOVES
SIMPLE

- antibacterial terry on thumb
 - anatomic palm stitching
 - anti-slip fabric for perfect grip on palm
- sizes: 5-6, 7-8, 9-10, 11-12



KID'S GLOVES
TINY

- anatomic palm stitching
 - anti-slip fabric
- sizes: 5-6, 7-8 (2104420)
3-4, 5-6, 7-8 (others)





2121392
white matt



1925867
anthracite|yellow fluo matt
NEW



2125883
green|blue matt

GIRL'S HELMET
MISSY

- In-mold technology
- 17 holes for effective ventilation
- front holes with insect net
- removable front visor
- reflective stickers on back
- EFS fit system

sizes: XS/S (48-53 cm)
S/M (55-58 cm)



KID'S HELMET
HERO

- In-mold technology
- 17 holes for effective ventilation
- front holes with insect net
- removable front visor
- reflective stickers on back
- EFS fit system

sizes: XS/S (48-53 cm)
S/M (55-58 cm)



match
accessories



2433610
black matt
NEW



2433628
pink|mint matt
NEW



2433687
lime|anthracite matt
NEW



2433633
blue matt
NEW



2433616
black|yellow fluo matt
NEW

KID'S HELMET
BUDDY

- In-mold technology
 - 14 holes for effective ventilation
 - reflective stickers
 - EFS fit system
 - **weight only 240 g** (size XS/S)
- sizes: XS/S (48-52 cm)
S/M (53-55 cm)





1921434
blue|red



2321438
green|blue matt

NEW



1921492
white|pink matt



2221422
white|purple matt



KID'S HELMET
PLUTO LIGHT

- In-mold technology
 - integrated rear LED's light
 - 6 super bright red LEDs
 - 3 modes: permanent, 2 types of flashing
 - 12 holes for effective ventilation
 - front holes with insect net
 - reflective stickers
 - EFS fit system
- sizes: XS/S (48-52 cm)
S/M (52-56 cm)



match
accessories





2225722
pink



2225788
green



KID'S HELMET
KITTY 2.0

- In-mold technology
- 14 holes for effective ventilation
- front holes with insect net
- front integrated visor
- reflective stickers on back
- EFS comfort fit system

· **weight only 170 g** (size XXS)

sizes: XXS (44-48 cm)

XS/S (48-52 cm)

S/M (52-56 cm)



match
accessories





REBEL 2325235
blue|red



REBEL 2225280
green



PONY 1908760
yellow



REBEL 2025290
white|pink



REBEL 2125229
white|pink

KID'S HELMET
REBEL | PONY

- HardShell technology
- 12 holes for effective ventilation
- front holes with insect net
- front integrated visor
- reflective stickers on back
- EFS comfort fit system

sizes: XS/S (48-52 cm)
S/M (52-56 cm)





2435515
black|red
NEW



2229518
black|green



MEN'S JERSEY
DREAM 3.0

- MicroCool fabric
 - mesh side elastic panels AirMesh™
 - **full-length front zipper**
 - 3 rear open pockets
 - reflective detailing
- sizes: S - 3XL



MEN'S JERSEY
DREAM 2.0

- MicroCool fabric
 - **full-length front zipper**
 - 3 rear open pockets
 - reflective detailing
- sizes: L - 3XL



match
accessories





2024318
black|green
NEW



2100516
black|yellow fluo



2000513
black|blue

MEN'S JERSEY
DREAM

- elastic MicroCool fabric
 - front zipper
 - 3 rear pockets
 - reflective detailing
- sizes: M - 3XL



MEN'S JERSEY
FACE

- elastic MicroCool fabric
 - front zipper
 - 3 rear pockets
 - reflective detailing
- sizes: M - 3XL



match
accessories



2022418
black|green



2100816
black|yellow fluo

MEN'S JERSEY
ENERGY

- elastic MicroCool fabric
 - front zipper
 - 3 rear pockets
 - reflective detailing
- sizes: M – 4XL

MicroCool™

match
accessories



MEN'S JERSEY
COMFORT

- warmer elastic fabric MicroCool
 - full-length front zipper with neck protector
 - rear zippered pocket
 - reflective detailing
- sizes: M – 3XL

MicroCool™  10 °C to 20 °C

match
accessories





2421681
lime|black
NEW



2431250
dark blue|orange
NEW

MEN'S RELAXED FIT JERSEY
FREETIME 2.0

- MicroCool fabric
- **relaxed fit**
- extended sleeve
- front zipper
- rear zippered pocket
- reflective detailing
- sizes: M - 4XL

match
accessories



MEN'S RELAXED FIT T-SHIRT
DIRT

- MicroCool fabric
- **relaxed fit**
- extended sleeve
- V neck
- reflective detailing
- sizes: M - 4XL

match
accessories





2324516
black|yellow fluo



2324561
yellow fluo



WINDJACKET
BORA 2.0

- windproof lightweight ripstop WindShell fabric with water-repellent finish
- stretchable side AirMesh™ panels for effective ventilation
- ventilation on the back
- comfortable elastic waist border and trim on sleeves
- full-length front zipper with neck protector
- easy access to rear jersey pockets through flapped hole
- reflective detailing

sizes: M – 4XL



5 °C to 20 °C



2213110
black|anthracite



2113103
black|blue



2113106
black|yellow fluo



2013181
black|green



MEN'S SHORT

ELITE

- Fibra Pro™ fabric
 - anti-slip leg band Fit+™
 - reflective detailing
 - Soft Man seat pad
- sizes: M - 3XL





1601410
black



2201010
black



2209910
black

MEN'S BIBSHORT
PROFI LACL

- Fibra Power™ fabric
 - elastic mesh bib straps AirMesh™
 - anti-slip leg band Fit+™
 - reflective detailing
 - Stretch Man elastic seat pad
- sizes: M – 3XL



MEN'S SHORT, KNICKER
RACE | RACE 3/4

- Fibra Pro™ fabric
 - anti-slip silicone leg band
 - reflective detailing
 - Soft Man seat pad
- sizes: M – XXL (2201010)
M – 3XL (2209910)



loop for gloves
loop for glasses



2433918
black|lime
NEW



2433935
dark blue|orange
NEW



elastic panel



2418110
black
NEW

BAGGY SHORT
FREEDOM 3.0

- new X6 breathable stretch fabric
 - inside removable elastic liner with Soft Man seat pad
 - elastic panel for even more comfort during ride
 - adjustable Velcro waist band
 - 2 open and 1 zippered pocket
 - loop for glasses|gloves
 - reflective detailing
- sizes: M -4XL (2433918)
M -3XL (2433935)



removable elastic
liner

MEN'S ELASTIC LINER
BOXER

- mesh elastic fabric AirMesh™
 - elastic waistband
 - anti-slip leg band
 - elastic Soft Man seat pad
- sizes: M -3XL





1827017
black



2027013
black|blue



1827018
black|green

BAGGY SHORT
FREEDOM

- X2 breathable fabric
- removable elastic liner with Soft Man seat pad
- adjustable Velcro waist band
- 3 zippered pockets
- reflective details

sizes: M - 3XL (1827017)

L - XXL (2027013)

M - XXL (1827018)



removable elastic
liner



2204110
black



2204116
black|yellow fluo



1921818
black|green



2121816
black|yellow fluo



2204118
black|green



1921810
black



2021813
black|blue

GLOVES

WINNER

sizes: S - XXL (2204110)

S - XL (2204116, 2204118)



GLOVES

GARDA

sizes: S - XXL





2009610
black



2026310
black



2026313
black|blue



2009618
black|green



2326316
black|yellow fluo



2026318
black|green



GLOVES
SPEED

sizes: M - XXL (2009610)
M - XL (2009618)



GLOVES
AIR

sizes: S - XXL (2026310, 2326316)
S - XL (2026313, 2026318)





1811110
black



2103916
black|yellow fluo

GLOVES

FOX+

- patches for touch screen control SmartTouch
- ventilation on palm, back and between fingers
- gel padding GelPro
- anti-slip material on palm
- reinforcement between thumb and point finger
- antibacterial terry on thumb
- comfortable Velcro closure

sizes: S - XL

SMART TOUCH



GLOVES

SPRING+

- patches for touch screen control SmartTouch
- ventilation on palm and fingers
- gel padding GelPro
- anti-slip material on palm and fingers
- reinforcement between thumb and point finger
- antibacterial terry on thumb
- comfortable Velcro closure
- reflective detailing REFLECTIV™

sizes: M - XL

SMART TOUCH

REFLECTIV



match
accessories





2106010
black



2110710
black



2110610
black

WARMERS

ARM | KNEE | LEG

- elastic fabric ThermoFit for fine warmth
- anatomic cut
- anti-slip elastic silicone leg ending
- leg warmers – ankle zippers
- reflective detailing REFLECTIV™

sizes: S – XL



2107018
black|green



2107016
black|yellow fluo



2107017
black|anthracite

SOCKS

SOX

- functional ClimaTec yarns
- elastic ankle cuff
- midfoot support band maximal comfort
- mesh for effective ventilation

sizes: M/L (40-43)

XL (44-47)





2434387
anthracite|lime matt
NEW



2434337
dark blue|grey matt
NEW

HELMET

X-RAY

- Double In-mold technology
- 19 holes for effective ventilation
- front holes with insect nets
- removable front visor
- reflective stickers on back
- QFS fit system
- **weight only 300 g** (size S/M)

sizes: S/M (55-58 cm)
L/XL (58-61 cm)





2011610
black matt



2011631
black|blue matt



2011681
black|green matt



HELMET
ESCAPE

- In-mold technology
- 23 holes for effective ventilation
- front holes with insect nets
- removable front visor
- reflective stickers on back
- QFS fit system

sizes: S/M (55-58 cm)
L/XL (58-61 cm)



MOLDING





2432710
black matt
NEW

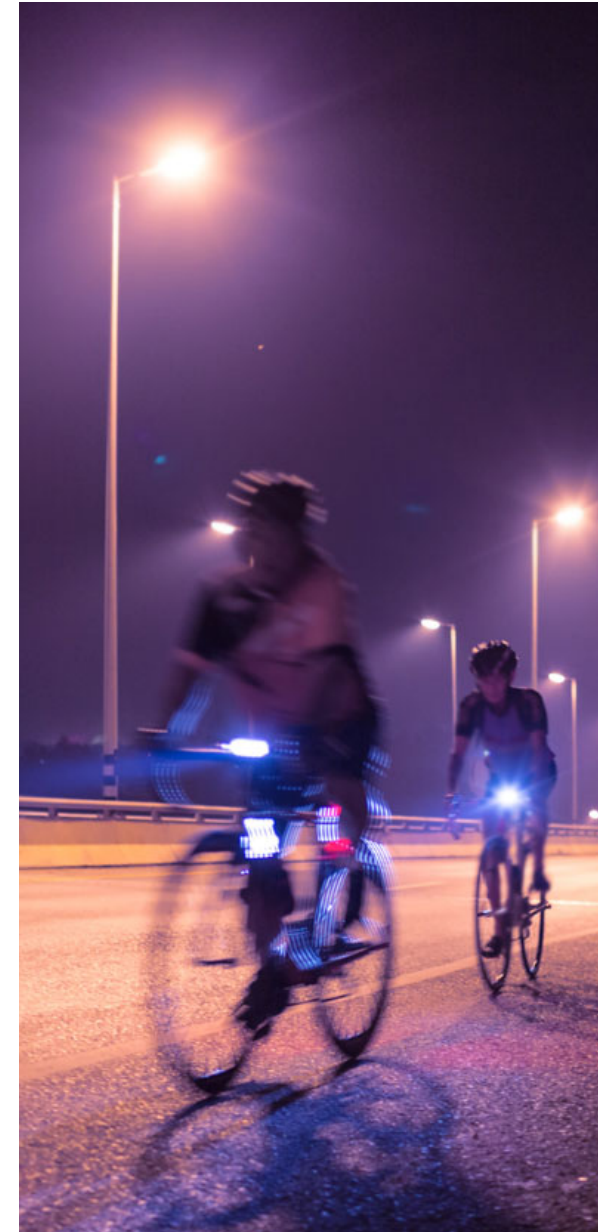


HELMET
CITY LIGHT

- In-mold technology
 - integrated rear LED's light
 - 6 super bright red LEDs
 - USB charging
 - 3 modes: permanent, 2 types of flashing
 - 10 holes for effective ventilation
 - front holes with insect nets
 - integrated front visor
 - reflective stickers on back
 - QFS fit system
- sizes: S/M (55-58 cm)
L/XL (58-61 cm)



MOLDING





2121516
black|yellow fluo matt



1921510
black matt



HELMET

VIRT LIGHT

- In-mold technology
- integrated rear LED's light
 - 6 super bright red LEDs
 - 3 modes: permanent, 2 types of flashing
- 20 holes for effective ventilation
- front holes with insect nets
- removable front visor
- reflective stickers on back
- QFS fit system

sizes: S/M (55-58 cm)
L/XL (58-61 cm)



MOLDING





2408418
black|green matt
NEW



1808416
black|yellow fluo matt

HELMET

MAGNUM

- In-mold technology
- 27 holes for effective ventilation
- front holes with insect nets
- removable front visor
- reflective stickers on back
- QFS comfort fit system

sizes: S/M (55-58 cm)
L/XL (58-61 cm)





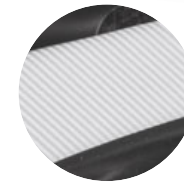
1908317
black|titanium matt



2008371
silver|black matt

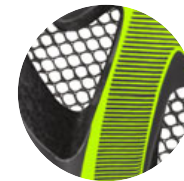


1908316
black|yellow fluo matt



HELMET
BIKER

- HardShell technology
 - 25 holes for effective ventilation
 - front holes with insect nets
 - removable front visor
 - reflective stickers on back
 - QFS comfort fit system
- sizes: S/M (55-58 cm)
L/XL (58-61 cm)



HELMET TECHNOLOGY | DESIGN | STYLE



IN-MOLD – direct moulding of the polystyrene to the shell forms an inseparable bond between the two materials. Thanks to this technology the helmet has very good mechanical features and excellent look.



HARDSHELL – thanks to the combination of very hard polycarbonate top shell and inside polystyrene shell the helmet is able to absorb the shocks and guarantees very high level of protection and safety.



QFS (Quick Fit System) – fit system which provides the perfect adjustment according to the head perimeter and ensures safety and comfortable positioning on the head. Maximum comfort is achieved by using very exact fixing mechanism with anatomically shaped wheel.



EFS (Easy Fit System) – fit system which provides the perfect adjustment according to the head perimeter. Perfect cycling helmet set-up is the basic presumption not even for its good function but also for the comfortable bike ride.



LED Light – Integrated rear light helps to increase your visibility on the road during daylight, nightfall and night.



E-BIKE READY – Means that this product is suitable for using on e-bike which demand equipment with higher durability and safety features. Cycle helmets have to be able to absorb hits in high speed, also additional safety features, like rear red lights, are welcomed.



All Etape cycling helmets are certified according to the EN 1078+A1 standard.

GLOVES TECHNOLOGY | DESIGN | FASTENING SYSTEMS



Take Off System – very effective system made by two silicone straps that guarantee very comfortable gloves removal.



Max Air Comfort – lightweight and breathable fabrics for excellent wicking. Bi-elastic mesh panels for maximal comfort and ventilation.



Gel Pro Technology – special gel padding guarantee maximal and long-lasting shock resistance of your hand. The right position of gel padding is very important for comfort and safe ride.



Anti Slip System – there are well-shaped anti slip fabrics on palm which enable firm grip of handlebar and prevent from slipping.



Sweat Dry Comfort – smooth antibacterial terry cloth on the thumb to dry the sweat in the hot weather or exhausting ride.



Lady Cut – women models have a cut which respects specific female hand shape. Also, the fabrics and gel padding position are different.



SmartTouch – thanks to SmartTouch technology, you will be able to interact your touchscreen (whether it is your MP3, camera, video camera, navigation or mobile phone).

FABRIC TECHNOLOGY



SuperDryntex Fabric made from functional polyester yarn. SuperDryntex is softer, more comfortable and with more natural touch than cotton or regular synthetic fibres. Very quickly transports moisture to the outside and thanks wicking effect keeps your body constantly fresh. Thanks to antibacterial treatment is very easy to take care of SuperDryntex garment. Different fabric styles made of SuperDryntex fibres offer various features and thermo-insulation features.



MicroCool The new functional fabric MicroCool is made of fine polyester fibres. Thanks to 3-D structure offers much better moisture evaporation from body and keep your body dry and comfortable during intensive performance.



AirMesh High breathable fabric used for most exposed parts. Prevents unwanted overheat and offers great moisture management. Thanks to its elasticity provides perfect fit.



Fibra Pro™ Fabric designed for pro race or just for ride. Its unique structure provides perfect moisture management, the fabric is highly elastic and makes you feel comfortable even during whole day ride.



Fibra Power™ New fabric offers compression power with freedom of movement. This Lycra fabric helps garments maintain originally engineered compression levels. The garments with Lycra fibres help you look and feel great.



X series Materials X series are highly breathable and provides durability. Perfectly combine requirements of sports apparel and lifestyle clothing. Material XC and X5 provides outstanding stretch.



ThermoFit is highly stretchable fabric with excellent thermo-insulation features provides durability. The fabric has very good elasticity, smooth soft touch and antibacterial finish.



WindShell Windproof fabric made of polyamide fibers with water-repellent finish. Inside protective layer increase resistance to windy and rainy weather. The fabric is very light and therefore the garment is possible to pack into small pouch.



ClimaTec functional fabric provides excellent moisture management and high durability. These yarns are very comfortable and maintain an optimal microclimate for the feet. Great for every sport activity.



Reflectiv This highly reflective material increases your safety due to higher visibility in bad weather condition or at night.



Stretch Seamless technology of Etape Stretch seat pad and its all-directions elasticity ensure maximum comfort during the bike ride. The seat pad shape and structure respect the anatomical differences of a woman body (**Stretch Woman**) and of a man body (**Stretch Man**).



Soft Seamless technology of Etape Soft seat pad ensures maximum comfort during the bike ride. The seat pad shape and structure respect the anatomical differences of a man body (**Soft Man**) and of a children body (**Soft Kid**).



SIZE CHART

MEN (UNISEX)	S	M	L	XL	XXL	3XL
height (cm)	160-175	170-180	175-185	180-190	185-195	190-200
bustline (cm)	88-94	94-100	100-106	106-112	112-118	118-124
waistline (cm)	76-82	82-88	88-94	94-100	100-106	106-112
hipline (cm)	90-96	96-102	102-108	108-114	114-120	120-126

WOMEN	S	M	L	XL	XXL
height (cm)	160-168	165-172	168-176	172-180	172-180
bustline (cm)	82-88	88-94	94-100	100-106	106-110
waistline (cm)	66-72	72-78	78-84	84-90	90-94
hipline (cm)	88-94	94-100	100-106	106-110	110-114

All conversions are approximate. Fits may vary by style or personal preference.

Deutschland

Cheyenne-Sport active wear
phone: +49 7256 202 4577
e-mail: info@cheyenne-sport.de
www.cheyenne-sport.de

Latvija

Aktiva turisma centrs EZI
phone: +371 64226223
e-mail: veikals@ezi.lv
www.veikals.ezi.lv

Magyarország

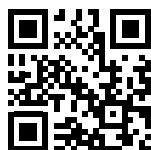
FXC Plusz Bt.
phone: +36 30 9714975
e-mail: balazs@protektorok.hu
www.protektorok.hu

Polska

Alpin Bike
phone: +48 77 4036823
e-mail: info@alpinbike.pl
www.alpinbike.pl

Slovenija

INTEGRA SPORT d.o.o.
phone: +386-3-700-11-20
e-mail: bikeshop@siol.net
www.bike-shop.si



VIVA Lanškroun spol. s r.o.
Opletalova 92, 563 01
Lanškroun, Czech Republic
tel.: +420 776 172 000
e-mail: info@viva-sport.cz
www.etape.cz