



etape

**CYCLING 2026**

CATALOGUE SPRING|SUMMER

## CONTENT

---

MAN ACTIVE .....	<a href="#">3-18</a>
LADY ACTIVE .....	<a href="#">19-30</a>
KID ACTIVE .....	<a href="#">31-35</a>
HELMETS .....	<a href="#">36-49</a>
TECHNOLOGY.....	<a href="#">50</a>
FABRIC TECHNOLOGY .....	<a href="#">51</a>





extended sleeves

**AIR**  
#MESH

2639993  
blue|black  
**NEW**



2639961  
black|yellow fluo  
**NEW**



MEN'S JERSEY  
**MAESTRO**

- MicroCool fabric
  - mesh side elastic panels AirMesh™
  - extended short sleeves
  - full-length front zipper
  - 3 rear open pockets
  - anti-slip silicone waist band Fit+™
  - reflective detailing
- sizes: M-3XL



match  
accessories





**AIR**  
#MESH

2605271  
grey|anthracite  
**NEW**



2410261  
black|yellow fluo

MEN'S JERSEY  
**LEADER**

- MicroCool fabric
  - mesh side elastic panels AirMesh™
  - full-length front zipper
  - 3 rear open pockets
  - reflective detailing
- sizes: M-3XL



MEN'S JERSEY  
**CUBE**

- MicroCool fabric
  - full-length front zipper
  - 3 rear open pockets
  - reflective detailing
- sizes: M-3XL





2534915  
black|red

MEN'S JERSEY  
**TEAM**

- MicroCool fabric
- mesh side elastic panels AirMesh™
- full-length front zipper
- 3 rear open pockets
- reflective detailing

sizes: S-4XL



2539119  
black|white

MEN'S JERSEY  
**BLAZE**

- MicroCool fabric
- mesh side elastic panels AirMesh™
- full-length front zipper
- 3 rear open pockets
- reflective detailing

sizes: M-3XL



2421681  
lime|black

MEN'S RELAXED FIT JERSEY  
**FREETIME 2.0**

- MicroCool fabric
- **relaxed fit**
- extended sleeve
- front zipper
- rear zippered pocket
- reflective detailing

sizes: M-4XL





2500816  
black|yellow fluo

**NEW**



2538315  
black|red

MEN'S JERSEY  
**COMFORT 2.0**

- warmer elastic fabric MicroCool
- full-length front zipper with neck protector
- 3 rear pockets

sizes: M-4XL

**MicroCool™**  10 °C to 20 °C

match  
accessories



MEN'S CYCLE TEE  
**ROCKY**

- elastic fabric MicroCool
  - **relaxed fit**
  - long sleeves
  - sporty V neck
- sizes: M-3XL

**MicroCool™**



2538561  
ochre|black

MEN'S SHIRT  
**SHIRT**

- breathable functional flannel
- elastic panels on shoulders
- relaxed fit
- 2 front pockets
- loop for glasses
- fastening by metal patents
- shortable sleeves with buttons
- used as casual or bike apparel

sizes: XL-XXL



2602261  
yellow fluo

**NEW**

WINDJACKET  
**MISTRAL 2.0**

- water and windproof lightweight ripstop WindShell fabric (front panel)
- stretchable AirMesh™ panels for effective ventilation
- elastic comfortable ending on shoulders and waist
- full-length front zipper with neck protector
- anti-slip silicone waist band Fit+™
- reflective detailing
- packable into rear pocket

sizes: M-3XL



**AIR**  
#MESH






 10 °C to 20 °C



2524551  
orange



2324516  
black|yellow fluo



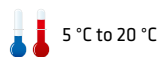
2324561  
yellow fluo



WINDJACKET  
**BORA 2.0**

- windproof lightweight ripstop WindShell fabric with water-repellent finish
- stretchable side AirMesh™ panels for effective ventilation
- ventilation on the back
- comfortable elastic waist border and trim on sleeves
- full-length front zipper with neck protector
- easy access to rear jersey pockets through flapped hole
- reflective detailing

sizes: M-4XL (2324516, 2524551)  
M-3XL (2324561)





2502575  
grey transparent  
**NEW**



2502567  
yellow fluo  
**NEW**

RAIN JACKET  
**VENTO**

- waterproof and windproof lightweight AquaShell™ fabric with membrane
- The water column of 5000 mm
- Taped seams – 100 % waterproof
- stretchable side AirMesh™ panels for effective ventilation
- foldable hood
- extra long on back to prevent rain and spray from wheel
- elastic waistband
- comfortable elastic waist border and trim on sleeves
- full-length front zipper with neck protector
- reflective detailing

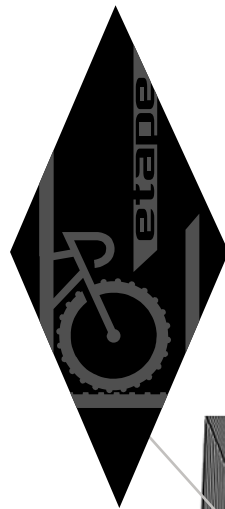
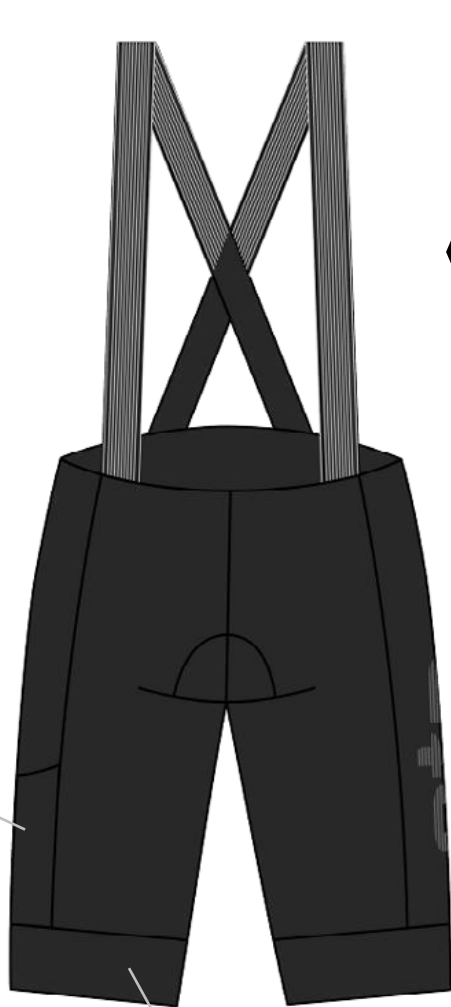
sizes: M-3XL (2502575)  
S-3XL (2502567)



**REFLECTIV**

**AquaShell** **AIR MESH** 5 °C to 20 °C

side pocket

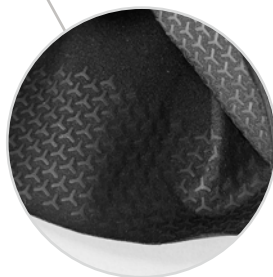


MEN'S BIBSHORTS  
**RIFT LACL**

- Fibra Pro PLUS™ fabric
  - Sporty minimalistic bibstraps
  - **open side pocket**
  - anti-slip silicone leg band Fit+™
  - reflective detailing
  - Stretch Man seat pad
- sizes: M-3XL

2638410  
black  
**NEW**

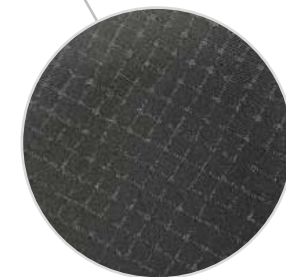
Fit+™



MEN'S BIBSHORTS  
**ELITE LACL 2.0**

- Fibra Pro™ fabric
  - Elastic mesh AirMesh™ bibstraps
  - anti-slip silicone leg band Fit+™
  - reflective detailing
  - Stretch Man seat pad
- sizes: M-3XL

2513210  
black





2623410  
black  
**NEW**



2623416  
black|yellow fluo  
**NEW**



2413110  
black

MEN'S SHORTS  
**RACING 2.0**

- Fibra Pro™ fabric
  - anti-slip silicone leg band Fit+™
  - reflective detailing
  - Soft Man seat pad
- sizes: M-XXL



MEN'S SHORTS  
**ELITE 2.0**

- Fibra Pro™ fabric
  - anti-slip silicone leg band Fit+™
  - reflective detailing
  - Soft Man seat pad
- sizes: M-3XL





2513105  
black|red



2201010  
black



2209910  
black

MEN'S SHORTS  
**ELITE TEAM**

- Fibra Pro™ fabric
  - anti-slip silicone leg band Fit+™
  - reflective detailing
  - Soft Man seat pad
- sizes: M-3XL



MEN'S SHORTS, MEN'S KNICKERS  
**RACE, RACE 3/4**

- Fibra Pro™ fabric
  - anti-slip silicone leg band
  - reflective detailing
  - Soft Man seat pad
- sizes: M-3XL





2633970  
anthracite

NEW



2533910  
black



2533951  
black|red



2433918  
black|lime

BAGGY SHORTS  
**FREEDOM 3.0**

- X6 breathable stretch fabric
- elastic panel for even more comfort during ride
- adjustable Velcro waist band
- 2 open and 1 zippered pocket
- loop for glasses and gloves
- reflective detailing
- inside removable elastic liner
  - elastic breathable material AirMesh™
  - antislip ending legs
  - Soft Man seat pad

sizes: M-3XL (2633970)  
M-4XL (other)

**X6 AIR**  
#MESH



removable  
elastic liner



match  
accessories



loop for glasses

elastic panels



**REFLECTIV**

ventilated

elastic panels



MEN'S PANTS  
**ENDURO**

- X6 breathable stretch fabric
- elastic panel for even more comfort during ride
- adjustable Velcro waist band
- 2 zippered pockets
- loop for glasses and gloves
- anatomically shaped knees
- elastic panels at the ankles for comfortable fit
- reflective detailing
- **no liner**
- suitable accessories liner BOXER (2418110)

2438210  
black

sizes: S-XXL





2603490  
white  
**NEW**



2603410  
black  
**NEW**



2418110  
black



MEN'S BASE LAYER  
**ELEMENT SC**

- lightweight mesh elastic fabric CoolPro™
- highly elastic and soft fabric with excellent moisture management fabric
- anatomic cut

sizes: M-3XL (2603410)  
M-XXL (2603490)

**COOL PRO**

MEN'S ELASTIC LINER  
**BOXER**

- mesh elastic fabric AirMesh™
  - elastic waistband
  - anti-slip leg band
  - elastic Soft Man seat pad
- sizes: M-3XL

**AIR**  
#MESH





2204110  
black



2204116  
black|yellow fluo



1921818  
black|green



2121816  
black|yellow fluo



2204118  
black|green



GLOVES

**WINNER**

sizes: S-XXL (2204110)  
S-XL (other)



1921810  
black



2021813  
black|blue

GLOVES

**GARDA**

sizes: S-XXL (1921810,1921818)  
M-XXL (2021813,2121816)





2409610  
black



2026310  
black



2411110  
black



2409616  
black|yellow fluo



2326316  
black|yellow fluo

GLOVES  
**SPEED 2.0**

sizes: M-XXL



GLOVES  
**AIR**

sizes: S-XXL (2026310)  
M-XXL (2326316)



GLOVES  
**FOX 2.0 +**

- Breathable Mesh fabric AirMesh™ at the back of the hand
  - ventilated palm with gel padding GelPro
  - anti-slip material on palm and fingers
  - patches for touch screen control SmartTouch
  - system ErgoPull with silicone for perfect fit
  - reinforcement between thumb and point finger
  - antibacterial terry on thumb
  - comfortable Velcro closure
  - reflective detailing REFLECTIV™
- sizes: M-XXL





2106010  
black



2110710  
black



2110610  
black

WARMERS

**ARM | KNEE | LEG**

- elastic ThermoFit for fine warmth
- anatomic cut
- anti-slip elastic silicone leg ending
- leg warmers – ankle zippers
- reflective detailing REFLECTIV™

sizes: S-XXL (2110610)

S-XL (2106010, 2110710)



2107016  
black|yellow fluo



2107017  
black|anthracite

SOCKS

**SOX**

- functional ClimaTec yarns
- elastic ankle cuff
- midfoot support band for maximal comfort
- mesh for effective ventilation

sizes: M/L (40-43)

XL (44-47)





2600682  
mint  
**NEW**



2500222  
magenta|black

WOMEN'S JERSEY  
**DONNA 2.0**

- elastic fabric SuperDryntex
- elastic mesh AirMesh™ for sleeves and side panels
- full-length front zipper
- 3 rear open pockets
- anti-slip silicone waist band Fit+™
- reflective detailing

sizes: S-XXL



WOMEN'S JERSEY  
**FORTUNA**

- elastic fabric MicroCool
- mesh side elastic panels AirMesh™
- full-length front zipper
- 3 rear open pockets
- reflective detailing

sizes: S-XXL





2532912  
pink|black



2432981  
mint|black



2229322  
bordeaux|pink

WOMEN'S JERSEY

**VIOLET**

- elastic fabric MicroCool
- full-length front zipper
- 3 rear open pockets
- reflective detailing

sizes: S-XXL



WOMEN'S JERSEY

**DIAMOND**

- elastic fabric MicroCool
- mesh side elastic panels AirMesh™
- full-length front zipper
- 3 rear open pockets
- reflective detailing

sizes: S-XL





2515029  
pink|white



WOMEN'S CYCLE TEE  
**ROXY**

- elastic fabric MicroCool
  - **relaxed fit**
  - sporty V neck
  - reflective detailing
- sizes: S-XXL



2538929  
white|pink



WOMEN'S TOP  
**SUMMER**

- elastic fabric SuperDryntex
  - mesh elastic panels AirMesh™
  - elastic trim at waist
  - 1 rear open pockets
  - reflective detailing
- sizes: S-XXL





2528812  
black|pink



2128812  
magenta|black

WOMEN'S JERSEY

**GAIA 2.0**

- warmer elastic fabric MicroCool
- full-length front zipper
- 3 rear pockets
- reflective detailing

sizes: S-XXL



WOMEN'S JERSEY

**GAIA**

- elastický materiál MicroCool warmer elastic fabric MicroCool
- full-length front zipper with neck protector
- rear zippered pocket
- reflective detailing

sizes: S-XL





2314167  
yellow fluo|anthracite



2514122  
lilac



**AIR**  
#MESH

WOMEN'S WINDJACKET

**GLORIA 2.0**

- windproof lightweight ripstop WindShell fabric with water-repellent finish
- stretchable side AirMesh™ panels for effective ventilation
- ventilation on the back
- comfortable elastic waist border and trim on sleeves
- full-length front zipper with neck protector
- easy access to rear jersey pockets through flapped hole
- reflective detailing

sizes: S-L (2314167)

S-XXL (2514122)



**WIND**  
SHELL

**AIR**  
#MESH

5 °C to 20 °C

high fitted elastic waist

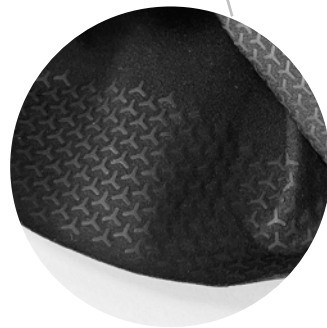


2605010  
black  
NEW



luxury logo

Fit+™



WOMEN'S SHORTS

**TERRY**

- Fibra Pro PLUS™ fabric
  - high elastic waistband
  - anti-slip leg band Fit+™
  - luxury logo on side
  - reflective detailing
  - elastic Stretch Women PRO seat pad
- sizes: S-XL



2433821  
black|pink

WOMEN'S SHORTS

**LIVIA 2.0**

- Fibra Pro™ fabric
  - elastic waistband
  - anti-slip leg band Fit+™
  - reflective detailing
  - elastic Stretch Women seat pad
- sizes: S-XXL





2523910  
black



short shorts

2540010  
black



2120810  
black

WOMEN'S SHORTS

**SARA 2.0**

- Fibra Pro™ fabric
- elastic waistband
- anti-slip leg band
- reflective detailing
- elastic Stretch Women seat pad

sizes: S-XXL



WOMEN'S SHORTS

**SUNNY**

- Fibra Pro™ fabric
- elastic waistband
- **short shorts**
- anti-slip leg band Fit+™
- reflective detailing
- elastic Stretch Women seat pad

sizes: S-L



WOMEN'S KNICKERS

**LIVIA 3/4**

- Fibra Pro™ fabric
- elastic mesh inserts AirMesh™ at the back of the knees
- elastic waistband
- anti-slip leg band Fit+™
- reflective detailing
- elastic Stretch Women seat pad

sizes: S-XXL





2423212  
black|pink



2523270  
anthracite

AIR  
#MESH



2201510  
black

WOMEN'S KINCKER  
**SARA 2.0 3/4**

- Fibra Pro™ fabric
  - elastic mesh inserts AirMesh™ at the back of the knees
  - elastic waistband
  - anti-slip leg band
  - reflective detailing
  - elastic Stretch Women seat pad
- sizes: M-XXL



WOMEN'S KINCKER  
**LADY 3/4**

- Fibra Pro™ fabric
  - elastic waistband
  - reflective detailing
  - elastic Soft Women seat pad
- sizes: S-XXL



loop for gloves



2405912  
black|pink



2538621  
black|pink

WOMEN'S BAGGY SHORTS

**CAT 2.0**

- X6 new breathable stretch fabric
- elastic panel for even more comfort during ride
- adjustable Velcro waist band
- 2 zippered pockets
- loop for glasses and gloves
- reflective detailing
- inside removable elastic liner
  - elastic breathable material AirMesh™
  - antislip ending legs
  - Stretch Woman seat pad

sizes: M-XXL



removable elastic  
liner

WOMEN'S BAGGY SHORTS

**CLAUDIA**

- X6 new breathable stretch fabric
- breathable elastic fabric SuperDryntex
- comfortable wide waistband
- reflective detailing
- **inside elastic liner**
  - antislip ending legs
  - Stretch Woman seat pad

sizes: S-XXL





2407412  
black|pink



2013412  
black|pink



2013410  
black

WOMEN'S SKIRT

**BELLA**

- breathable X6 fabric
- breathable elastic SuperDryntex fabric at waistband
- comfortable wide waistband
- secret zippered pocket
- reflective detailing
- without removable elastic liner with seat pad
- fully compatible with shorts elastic liner LUNA (2538810)

sizes: S-XXL



WOMEN'S SKIRT

**LAURA**

- breathable SuperDryntex fabric
  - comfortable wide waistband
  - removable elastic liner with elastic Stretch Woman seat pad and anti-slip silicone ending
  - reflective detailing
- sizes: S-XL (2013410)  
S-L (2013412)



removable elastic  
liner



2640420  
pink  
**NEW**

WOMEN'S BASE LAYER

**VERONA SC**

- lightweight mesh elastic fabric CoolPro™
  - highly elastic and soft fabric with excellent moisture management fabric
  - anatomic lady's cut
- sizes: S-XL

**COOL PRO**



2538810  
black

WOMEN'S PADDED PANTIES

**LUNA**

- mesh elastic fabric AirMesh™
  - elastic waistband
  - elastic Stretch Women seat pad
- sizes: S-XXL

**AIR**  
#MESH



2534119  
black|white



2434112  
black|pink



WOMEN'S GLOVES

**BETTY 2.0**

sizes: S-L





2422281  
black|mint



2422212  
white|pink



1926912  
black|pink



2026919  
black|white



2122222  
pink|black



2122210  
black



1926992  
white|pink

WOMEN'S GLOVES

**LIANA**

sizes: S-L



WOMEN'S GLOVES

**AMBRA**

sizes: S-L





2631528  
pink|lime  
**NEW**



2431563  
yellow fluo|blue



2630717  
black/graphic  
**NEW**



KID'S JERSEY  
**LUCKY**

- MicroCool fabric
- front zipper
- 3 rear open pockets
- reflective detailing

sizes:

128/134, 140/146, 152/158, 164/170



KID'S CYCLE TEE  
**BOOM**

- MicroCool fabric
- relaxed fit
- extended short sleeves
- sporty V neck
- reflective detailing

sizes:

116/122, 128/134, 140/146, 152/158





2126890  
white|pink



2126834  
blue



2626880  
green  
**NEW**



2626823  
pink  
**NEW**

KID'S JERSEY

**RIO**

- MicroCool fabric
- front zipper
- 3 rear open pockets
- reflective detailing

sizes:

116/122, 128/134, 140/146 (2126890)

128/134, 140/146, 152/158 (2126834)

116/122, 128/134 (2626880, 2626823)





REFLECTIV

elastic waistband

2638710  
black  
NEW



2435312  
black|pink



2435318  
black|green

KID'S BAGGY SHORTS

**RASCAL 2.0**

- X2 breathable stretch fabric
- **inside elastic liner**
  - antislip ending legs
  - Soft Kid seat pad
- comfortable wide waistband
- flopped side pocket
- reflective detailing

sizes:

128/134, 140/146, 152/158, 164/170



KID'S SHORTS

**JUNIOR 2.0**

- Fibra Pro™ fabric
- drawcord at waistband
- anti-slip leg band ending Fit+™
- reflective detailing
- anatomic Soft Kid seat pad

sizes:

116/122, 128/134, 140/146, 152/158, 164/170





1505813  
black|blue



58-10  
black



2304938  
blue|green



2304922  
purple|pink

KID'S SHORTS  
**JUNIOR**

- Fibra Pro™ fabric
- drawcord at waistband
- anti-slip leg band ending
- reflective detailing
- anatomic Soft Kid seat pad

sizes:

116/122, 128/134, 140/146, 152/158 (1505813)

128/134, 140/146, 152/158 (58-10)



KID'S GLOVES  
**SIMPLE 2.0**

- antibacterial terry on thumb
- breathable elastic back-of-hand mesh AirMesh™
- anatomic palm stitching
- anti-slip fabric for perfect grip on palm

sizes: 5-6, 7-8, 9-10, 11-12





2604486  
green  
**NEW**



2404435  
red|blue



2604423  
pink  
**NEW**



2104490  
white|pink



2404433  
blue



2204480  
green



1904492  
white



2404428  
pink|mint

KID'S GLOVES

**TINY**

- anatomic palm stitching
  - anti-slip fabric
- sizes: 3-4, 5-6, 7-8





2640710  
black matt  
NEW



2640719  
black|white matt  
NEW



2640716  
black|yellow fluo matt  
NEW



HELMET  
**TAKE-OFF**

- Multi In-mold technology
  - 17 holes for effective ventilation
  - **magnetic removable visor FastMAG™**
  - front holes with insect nets
  - comfortable padding Comfort+
  - reflective stickers on back
  - new fit system **CFS-3D™**
  - Weight only 280 g (size S/M)
- sizes: S/M (55-58 cm)  
L/XL (58-61 cm)  
2640719 only S/M





2640814  
black|grey matt  
**NEW**



2434387  
anthracite|lime matt

HELMET  
**SHIFTY**

- In-mold technology
- 24 holes for effective ventilation
- front holes with insect nets
- **removable and adjustable visor**
- reflective stickers on back
- QFS fit system

sizes: **S/M (51-55 cm)**  
M/L (55-58 cm)  
L/XL (58-61 cm)



HELMET  
**X-RAY**

- Double In-mold technology
- 19 holes for effective ventilation
- front holes with insect nets
- removable front visor
- reflective stickers on back
- QFS fit system
- Weight only 300 g (size S/M)

sizes: **S/M (55-58 cm)**  
L/XL (58-61 cm)



2634371  
black|grey matt  
**NEW**





2641588  
olive|anthracite matt  
**NEW**



2641561  
lime|black matt  
**NEW**



HELMET  
**TOMCAT**

- In-mold technology
  - 22 holes for effective ventilation
  - **removable and adjustable visor**
  - front holes with insect nets
  - comfortable padding Comfort+
  - reflective stickers on back
  - QFS fit system
  - Weight only 270 g (size S/M)
- sizes: S/M (53-55 cm) – only 2641561  
M/L (55-58 cm)  
L/XL (58-61 cm)



MOLDING





2621561  
yellow fluo|black matt  
**NEW**



2621521  
pink|black matt  
**NEW**



HELMET  
**VIRT LIGHT**

- In-mold technology
- Integrated rear LED's light
  - 6 super bright red LEDs
  - 3 modes: permanent, 2 types of flashing
- 20 holes for effective ventilation
- front holes with insect nets
- removable front visor
- reflective stickers on back
- QFS fit system

sizes: S/M (55-58 cm)  
L/XL (58-61 cm)





1925117  
black|titanium matt



2325116  
black|yellow fluo matt



2525191  
black|white matt



2525151  
black|red matt

HELMET  
**TWISTER**

- HardShell technology
- 25 holes for effective ventilation
- front holes with insect nets
- removable front visor
- reflective stickers on back
- QFS comfort fit system

sizes: S/M (55-58 cm)  
L/XL (58-61 cm)





2526697  
white|grey matt



2526612  
black|pink matt

WOMEN'S|GIRL'S HELMETT  
**VESPER**

- In-mold technology
- 23 holes for effective ventilation
- front holes with insect nets
- removable front visor
- reflective stickers on back
- QFS comfort fit system

sizes: XS/S (53-55 cm)

S/M (55-58 cm)

L/XL (58-61 cm)



MOLDING





1917012  
black|pink matt



2417097  
white|silver matt



2417018  
black|mint matt



2417092  
white|pink matt

WOMEN'S HELMET

**VENUS**

- HardShell technology
- 25 holes for effective ventilation
- front holes with insect nets
- removable front visor
- reflective stickers on back
- QFS comfort fit system

sizes: S/M (55-58 cm)

L/XL (58-61 cm)





REFLECTIV

2641299  
black|graphic matt  
NEW



2641281  
lime|black matt  
NEW

FULL FACE KID'S HELMET  
**SCUDO**

- In-mold technology
- integral construction
- 24 holes for effective ventilation
- front holes with insect net
- removable and adjustable front visor
- **removable chin guard**
- reflective stickers on back
- QFS fit system

sizes: XS/S (48-52 cm)  
S/M (51-55 cm)





2625838  
green|blue matt  
**NEW**



2121392  
white matt



2125876  
anthracite|yellow fluo matt

KID'S HELMET  
**HERO**

- In-mold technology
- 17 holes for effective ventilation
- front holes with insect net
- removable front visor
- reflective stickers on back
- EFS fit system

sizes: XS/S (48-53 cm)  
S/M (53-55 cm)



GIRL'S HELMET  
**MISSY**

- In-mold technology
- 17 holes for effective ventilation
- front holes with insect net
- removable front visor
- reflective stickers on back
- EFS fit system

sizes: XS/S (48-53 cm)





2421433  
blue matt



1921492  
white|pink matt



2221422  
white|purple matt



KID'S HELMET  
**PLUTO LIGHT**

- In-mold technology
- integrated rear LED's light
  - 6 super bright red LEDs
  - 3 modes: permanent, 2 types of flashing
- 12 ventilačních otvorů
- 12 holes for effective ventilation
- front holes with insect net
- reflective stickers
- EFS fit system

sizes: XS/S (48-52 cm)  
S/M (52-56 cm)





2633699  
black|graphic matt  
**NEW**



2433628  
pink|mint matt



KID'S HELMET  
**BUDDY**

- In-mold technology
  - 14 holes for effective ventilation
  - reflective stickers
  - EFS fit system
  - **weight only 240 g** (size XS/S)
- sizes: XS/S (48-52 cm)  
S/M (53-55 cm)



2433610  
black matt



2433687  
lime|anthracite matt





2534710  
black matt



2640520  
pink matt  
**NEW**



2640560  
yellow fluo matt  
**NEW**

JUNIOR'S|KID'S HELMET

**FLIP**

- In-mold technology
- 14 holes for effective ventilation
- reflective stickers
- QFS fit system
- **weight only** 250 g (size S/M)

sizes: S/M (53-55 cm)

M/L (55-58 cm)



KID'S HELMET

**CADDY**

- ABS Shell technology
- 11 holes for effective ventilation
- reflective stickers
- EFS fit system
- **weight only** 295 g (size XS/S)

sizes: XS/S (48-52 cm)

S/M (53-55 cm)





2625723  
pink  
NEW



2625780  
green  
NEW



KID'S HELMET  
**KITTY 2.0**

- In-mold technology
- 14 holes for effective ventilation
- front holes with insect net
- front integrated visor
- reflective stickers on back
- EFS comfort fit system
- **weight only 170 g** (size XXS)
- sizes: **XXS (44-48 cm)**  
XS/S (48-52 cm)





REBEL 2625230  
blue  
**NEW**



REBEL 2325235  
blue|red



PONY 1908760  
yellow



REBEL 2025290  
white|pink



REBEL 2425229  
pink|white

KID'S HELMET

**REBEL | PONY**

- HardShell technology
- 12 holes for effective ventilation
- front holes with insect net
- front integrated visor
- reflective stickers on back
- EFS comfort fit system

sizes: XS/S (48-52 cm)  
S/M (52-56 cm)



## HELMET TECHNOLOGY | DESIGN | STYLE



**IN-MOLD** – direct moulding of the polystyrene to the shell forms an inseparable bond between the two materials. Thanks to this technology the helmet has very good mechanical features and excellent look.



**HARDSHELL** – thanks to the combination of very hard polycarbonate top shell and inside polystyrene shell the helmet is able to absorb the shocks and guarantees very high level of protection and safety.



**QFS (Quick Fit System)** – fit system which provides the perfect adjustment according to the head perimeter and ensures safety and comfortable positioning on the head. Maximum comfort is achieved by using very exact fixing mechanism with anatomically shaped wheel.



**EFS (Easy Fit System)** – fit system which provides the perfect adjustment according to the head perimeter. Perfect cycling helmet set-up is the basic presumption not even for its good function but also for the comfortable bike ride.



**LED Light** – Integrated rear light helps to increase your visibility on the road during daylight, nightfall and night.



**E-BIKE READY** – Means that this product is suitable for using on e-bike which demand equipment with higher durability and safety features. Cycle helmets have to be able to absorb hits in high speed, also additional safety features, like rear red lights, are welcomed.



All Etape cycling helmets are certified according to the EN 1078+A1 standard.

## GLOVES TECHNOLOGY | DESIGN | FASTENING SYSTEMS



**Take Off System** – very effective system made by two silicone straps that guarantee very comfortable gloves removal.



**Max Air Comfort** – lightweight and breathable fabrics for excellent wicking. Bi-elastic mesh panels for maximal comfort and ventilation.



**Gel Pro Technology** – special gel padding guarantee maximal and long-lasting shock resistance of your hand. The right position of gel padding is very important for comfort and safe ride.



**Anti Slip System** – there are well-shaped anti slip fabrics on palm which enable firm grip of handlebar and prevent from slipping.



**Sweat Dry Comfort** – smooth antibacterial terry cloth on the thumb to dry the sweat in the hot weather or exhausting ride.



**Lady Cut** – women models have a cut which respects specific female hand shape. Also, the fabrics and gel padding position are different.



**SmartTouch** – thanks to SmartTouch technology, you will be able to interact your touchscreen (whether it is your MP3, camera, video camera, navigation or mobile phone).

## FABRIC TECHNOLOGY



**SuperDryntex** Fabric made from functional polyester yarn. SuperDryntex is softer, more comfortable and with more natural touch than cotton or regular synthetic fibres. Very quickly transports moisture to the outside and thanks wicking effect keeps your body constantly fresh. Thanks to antibacterial treatment is very easy to take care of SuperDryntex garment. Different fabric styles made of SuperDryntex fibres offer various features and thermo-insulation features.



**MicroCool** The new functional fabric MicroCool is made of fine polyester fibres. Thanks to 3-D structure offers much better moisture evaporation from body and keep your body dry and comfortable during intensive performance.



**AirMesh** High breathable fabric used for most exposed parts. Prevents unwanted overheat and offers great moisture management. Thanks to its elasticity provides perfect fit.



**Fibra Pro™** Fabric designed for pro race or just for ride. Its unique structure provides perfect moisture management, the fabric is highly elastic and makes you feel comfortable even during whole day ride.



**X series** Materials X series are highly breathable and provides durability. Perfectly combine requirements of sports apparel and lifestyle clothing. Material XC and X5 provides outstanding stretch.



**ThermoFit** is highly stretchable fabric with excellent thermo-insulation features provides durability. The fabric has very good elasticity, smooth soft touch and antibacterial finish.



**WindShell** Windproof fabric made of polyamide fibers with water-repellent finish. Inside protective layer increase resistance to windy and rainy weather. The fabric is very light and therefore the garment is possible to pack into small pouch.



**ClimaTec** functional fabric provides excellent moisture management and high durability. These yarns are very comfortable and maintain an optimal microclimate for the feet. Great for every sport activity.



**Reflectiv** This highly reflective material increases your safety due to higher visibility in bad weather condition or at night.



**Stretch** Seamless technology of Etape Stretch seat pad and its all-directions elasticity ensure maximum comfort during the bike ride. The seat pad shape and structure respect the anatomical differences of a woman body (**Stretch Woman**) and of a man body (**Stretch Man**).



**Soft** Seamless technology of Etape Soft seat pad ensures maximum comfort during the bike ride. The seat pad shape and structure respect the anatomical differences of a man body (**Soft Man**) and of a children body (**Soft Kid**).



## SIZE CHART

MEN (UNISEX)	S	M	L	XL	XXL	3XL
height (cm)	160-175	170-180	175-185	180-190	185-195	190-200
bustline (cm)	88-94	94-100	100-106	106-112	112-118	118-124
waistline (cm)	76-82	82-88	88-94	94-100	100-106	106-112
hipline (cm)	90-96	96-102	102-108	108-114	114-120	120-126

WOMEN	S	M	L	XL	XXL
height (cm)	160-168	165-172	168-176	172-180	172-180
bustline (cm)	82-88	88-94	94-100	100-106	106-110
waistline (cm)	66-72	72-78	78-84	84-90	90-94
hipline (cm)	88-94	94-100	100-106	106-110	110-114

All conversions are approximate. Fits may vary by style or personal preference.



**Deutschland**

Cheyenne-Sport active wear  
phone: +49 7256 202 4577  
e-mail: [info@cheyenne-sport.de](mailto:info@cheyenne-sport.de)  
[www.cheyenne-sport.de](http://www.cheyenne-sport.de)

**Latvija**

Aktīva turisma centrs EZI  
phone: +371 64226223  
e-mail: [veikals@ezi.lv](mailto:veikals@ezi.lv)  
[www.veikals.ezi.lv](http://www.veikals.ezi.lv)

**Magyarország**

FXC Plusz Bt.  
phone: +36 30 9714975  
e-mail: [balazs@protektorok.hu](mailto:balazs@protektorok.hu)  
[www.protektorok.hu](http://www.protektorok.hu)

**Polska**

Alpin Bike  
phone: +48 77 4036823  
e-mail: [info@alpinbike.pl](mailto:info@alpinbike.pl)  
[www.alpinbike.pl](http://www.alpinbike.pl)

**Slovenija**

INTEGRA SPORT d.o.o.  
phone: +386-3-700-11-20  
e-mail: [bikeshop@siol.net](mailto:bikeshop@siol.net)  
[www.bike-shop.si](http://www.bike-shop.si)

VIVA Lanškroun spol. s r.o. • Opletalova 92, 563 01 Lanškroun, Czech Republic • tel.: +420 776 172 000 • e-mail: [info@viva-sport.cz](mailto:info@viva-sport.cz)

[www.etape.cz](http://www.etape.cz)

